

The new new.



Table of contents



PAGES 3-13

New collections

Sketch, prototype, repeat. Good design is a step-by-step process. Take a peek at the latest designs that made it through.

PAGES 14-16

New collection extensions

PAGES 17-19

Design story : Decade

New collections





APT TABLE COLLECTION



APT TABLE COLLECTION PRICE: \$1499-\$1699 MATERIALS: FORBO LINOLEUM TOP, SOLID WOOD LEGS (WHITE OAK, WALNUT)



COLORS: PUTTY + WHITE OAK

BLACK + WALNUT



NAVY GREEN + WHITE OAK

COBALT + WALNUT

DECADE CHAIR



DECADE CHAIR PRICE: \$179 MATERIALS: 80% RECYCLED PLASTIC, 20% GLASS FIBER FOR STRENGTH
BIFMA



STACKS 12 HIGH COLORS: PUTTY OLIVE BLACK TOMATO WHITE MARINE BLUE MUSTARD
INDOOR / OUTDOOR
MADE IN ITALY



HEADS UP COLLECTION





HEADS UP COLLECTION
BIFMA

PRICE: \$2699

MATERIALS: WOOD UPHOLSTERED SHELL, (WOOD BASE) SOLID WHITE OAK / (SWIVEL BASE) STEEL + ALUMINUM



COLORS:

MAHARAM MESSENDER
IN EVERGLADE
WITH SWIVEL BASE +
WHITE OAK BASE

MAHARAM MODE
IN MACHINE
WITH SWIVEL BASE +
WHITE OAK BASE

GABRO LIGHT GREY
WITH SWIVEL BASE +
WHITE OAK BASE



OPEN PLAN COLLECTION





OPEN PLAN COLLECTION

PRICE: \$999-\$1699

MATERIALS: SOLID WOOD RAILS, WOOD SHELVES WITH WALNUT OR WHITE OAK VENEER

COLORS:

WHITE OAK



WALNUT



SIZES:

LARGE LOW

LONG AND LOW

SMALL LOW

TALL

TANGENT LOUNGE CHAIR





TANGENT LOUNGE CHAIR PRICE: \$1399 MATERIALS: STEEL FRAME, UPHOLSTERED SHELL
BIFMA



COLORS:

MAHARAM CANDOR
IN FLARE
WITH MUSTARD LEG

MAHARAM MELD
IN PANDA
WITH OBLIVION LEG

MAHARAM CANDOR
IN CANNOLI
WITH PUTTY LEG

MAHARAM MESSENGER
IN EVERGLADE
WITH NAVY GREEN LEG

New collection extensions



HECKS LARGE OTTOMANS PRICE: \$799 MATERIALS: PADDED WOOD FRAME
BIFMA



THURMOND BLUSH



THURMOND CHARCOAL



THURMOND CITRON



THURMOND GRASSHOPPER



THURMOND LIGHT GREY



THURMOND LILAC



THURMOND MARINE BLUE



THURMOND OLIVE



THURMOND TOMATO



THURMOND WHEAT

HECKS LARGE LEATHER OTTOMANS PRICE: \$1599 MATERIALS: PADDED WOOD FRAME; ANILINE LEATHER
BIFMA



CAMEL LEATHER



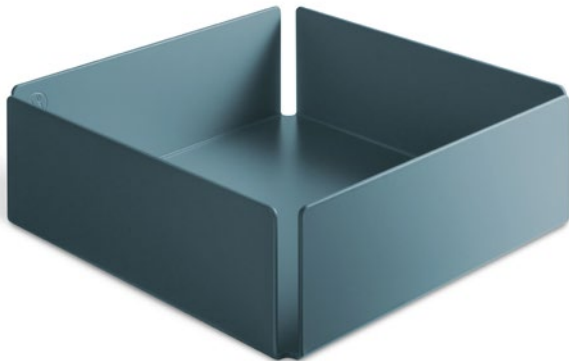
INK LEATHER



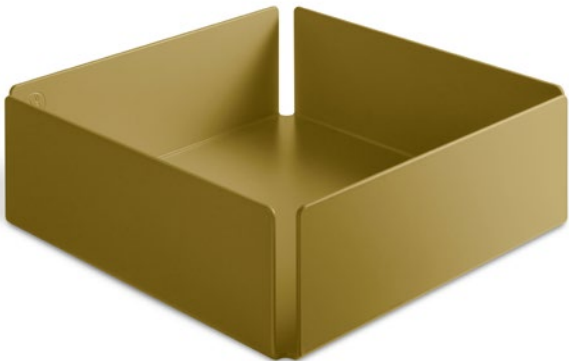
TERRACOTTA LEATHER



TABS TRAY PRICE: \$109 MATERIALS: POWDER-COATED ALUMINUM

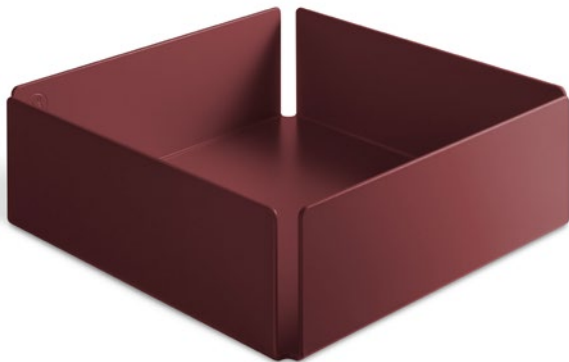


MARINE BLUE

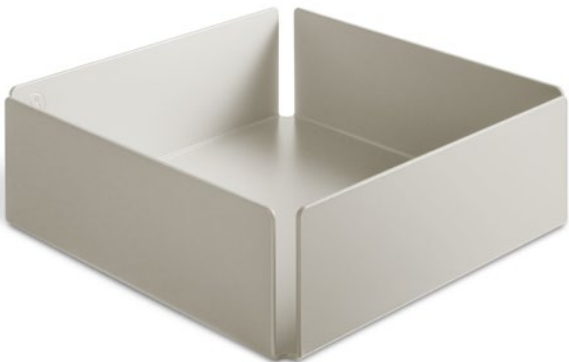


OCHRE

COLORS:



OXBLOOD



PUTTY

Design story : Decade



DECADE CHAIR

PRICE: \$179

MATERIALS: RECYCLED PLASTIC AND GLASS FIBERS



Our goal with Decade was to create a timeless plastic chair that could last for a good long time. It needed to be durable, cleanable and super stackable. We initially designed it as two pieces, but scrapped it for a simple one-piece silhouette. This allowed the chair to stack right on the frame, making the most of every millimeter.

After two years and countless sketches, prototypes, seating bucks and 3D models, we dialed in every last detail to achieve the peak of comfort perfection. Then we took it to Italy where we teamed up with molding virtuosos to create the real deal—a plastic chair that's well worth the wait.



Thank you!



We're here for you from start to finish – real people at the ready. If you have a question or want to get started on something, give us a call.

BLU DOT SYDNEY

hello@bludot.com.au

(02) 9313-5400

M-F: 10-4