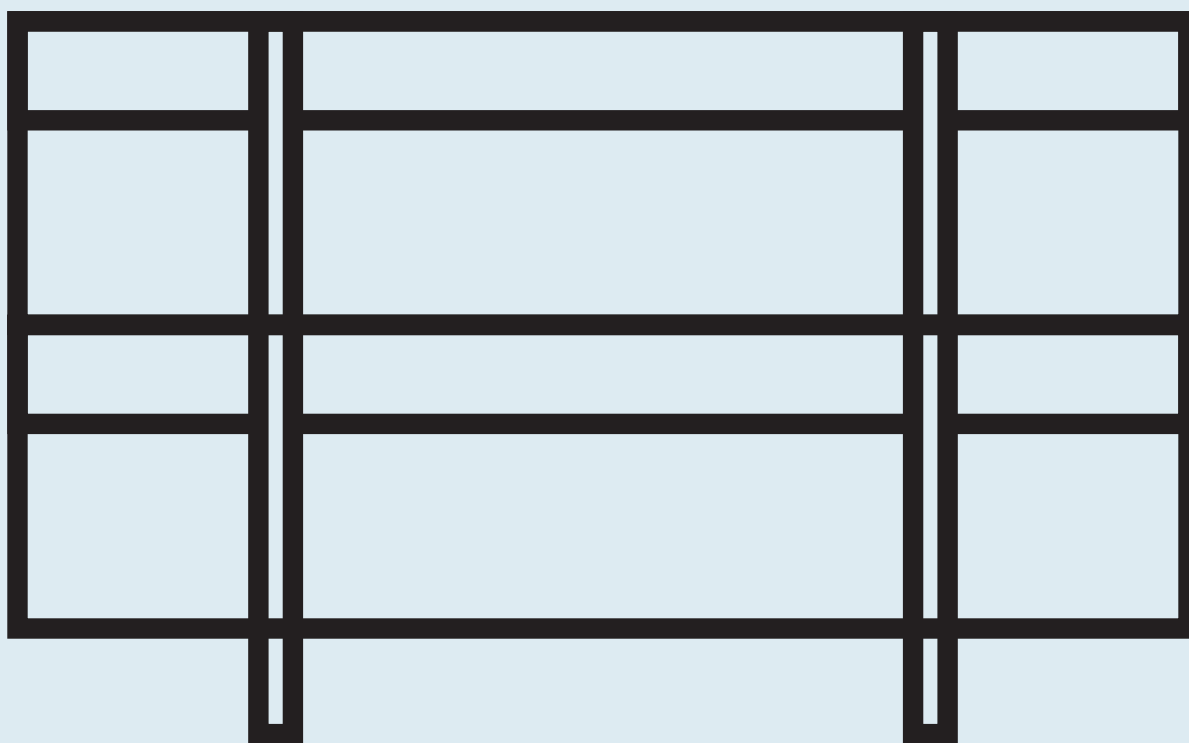
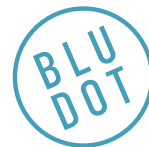


# Chicago Lowboy

DESIGNED IN 1997

ASSEMBLY NOTES | REV 02



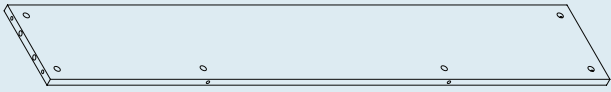
COMPELLING NEGATIVE SPACE--LIKE A GAP TOOTH.

Sometimes good design is about what's not there. The Chicago series takes advantage of negative space, creating smart, elegant storage.

NEED A HAND?

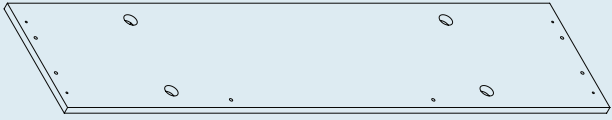
Contact us at [service@bludot.com](mailto:service@bludot.com) or **844.425.8368** for assistance.

# Parts & Hardware



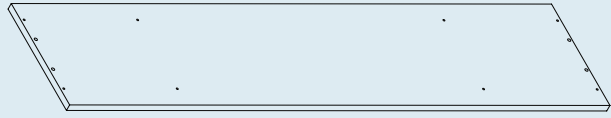
QTY 2

Back Panel



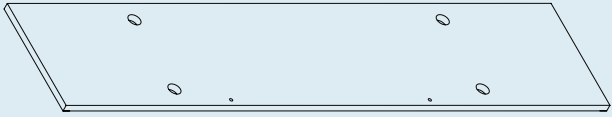
QTY 1

Bottom Panel



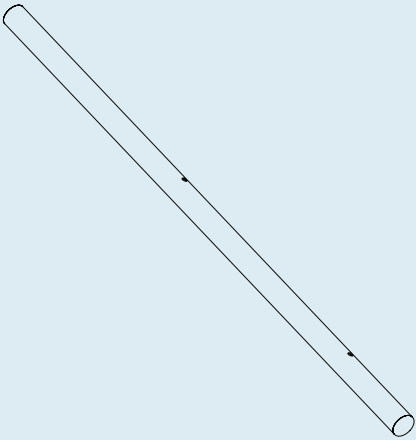
QTY 1

Top Panel



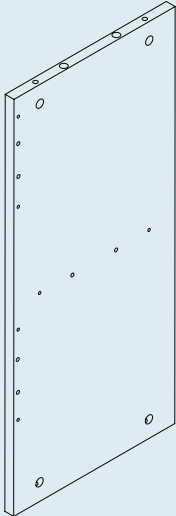
QTY 1

Shelf Panel



QTY 4

Post



QTY 2

Side Panel

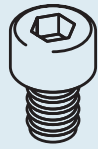
# Parts & Hardware



QTY 24

---

Pt. 5001



QTY 16

---

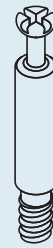
Pt. 1001



QTY 4

---

Pt. 1207



QTY 24

---

Pt. 5002



QTY 20

---

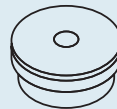
Pt. 5005



QTY 8

---

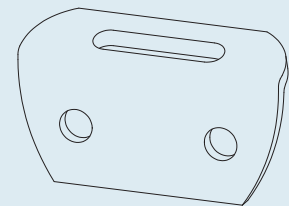
Pt. 8001



QTY 8

---

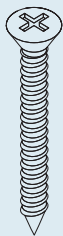
Pt. 8002



QTY 2

---

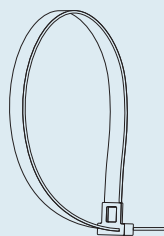
Pt. 8046



QTY 2

---

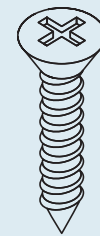
Pt. 1218



QTY 1

---

Pt. 8042

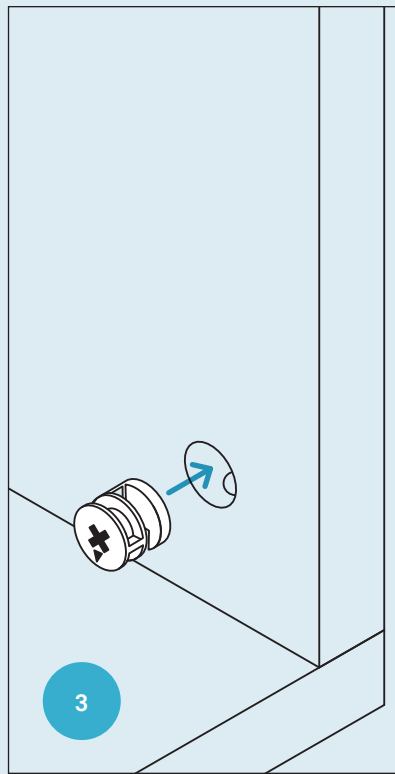
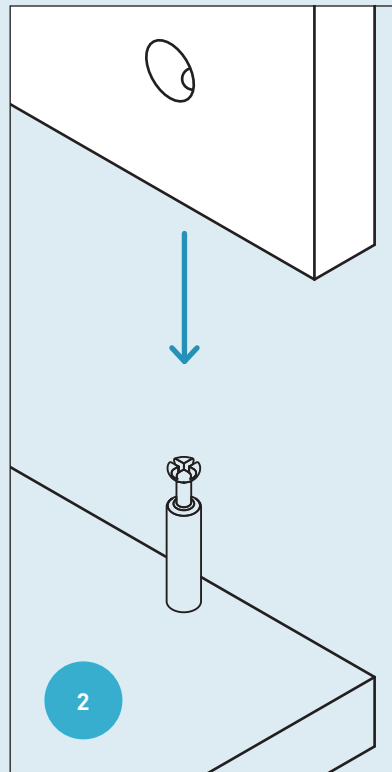
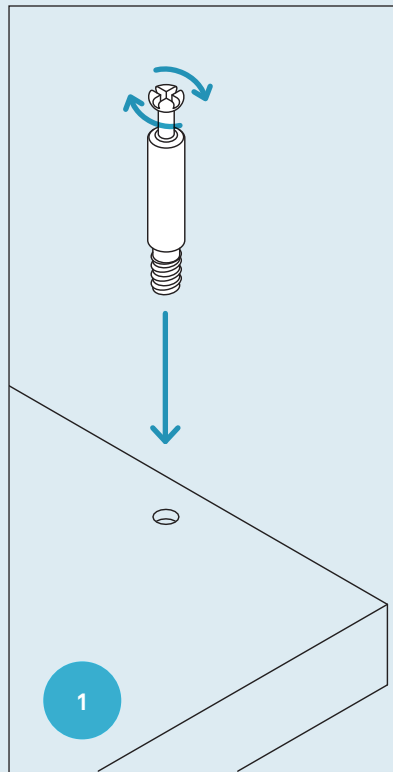


QTY 2

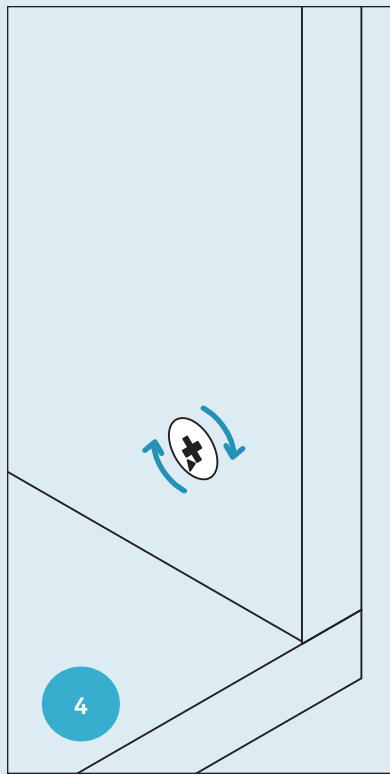
---

Pt. 1217

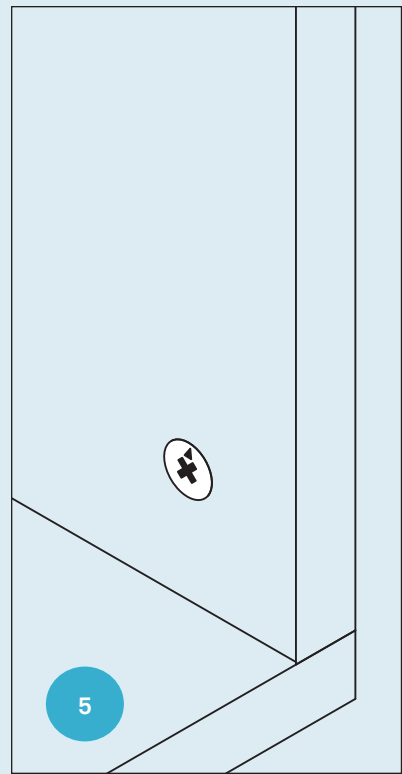
# How to use the cam lock system



Note direction of cam arrow.



Turn cam clockwise 1/2 turn or until tight.

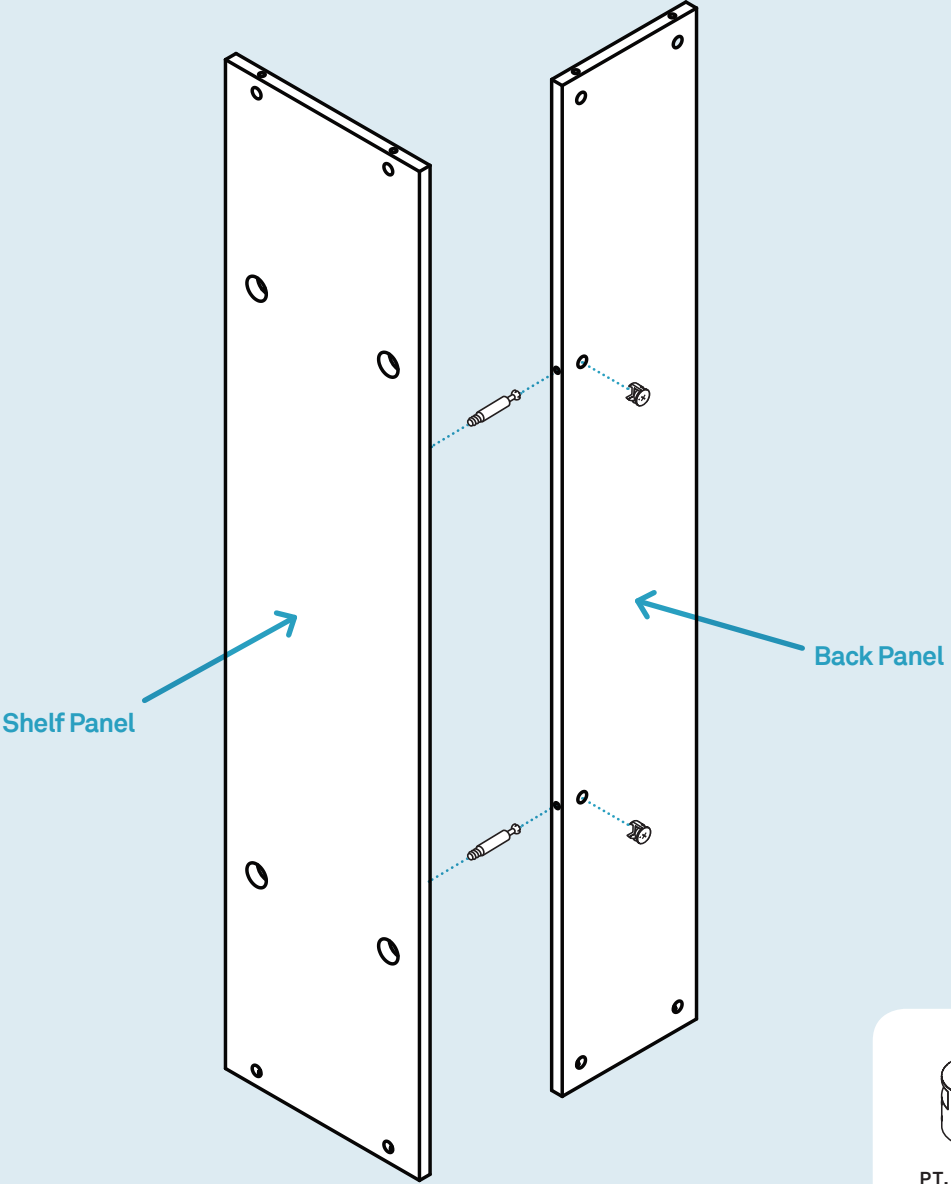


Note direction of cam arrow.

# Step 01

## ATTACH BACK PANEL.

Attach the back panel to the shelf panel using the provided hardware as shown. Refer to page 3 on how to use the cam lock system.



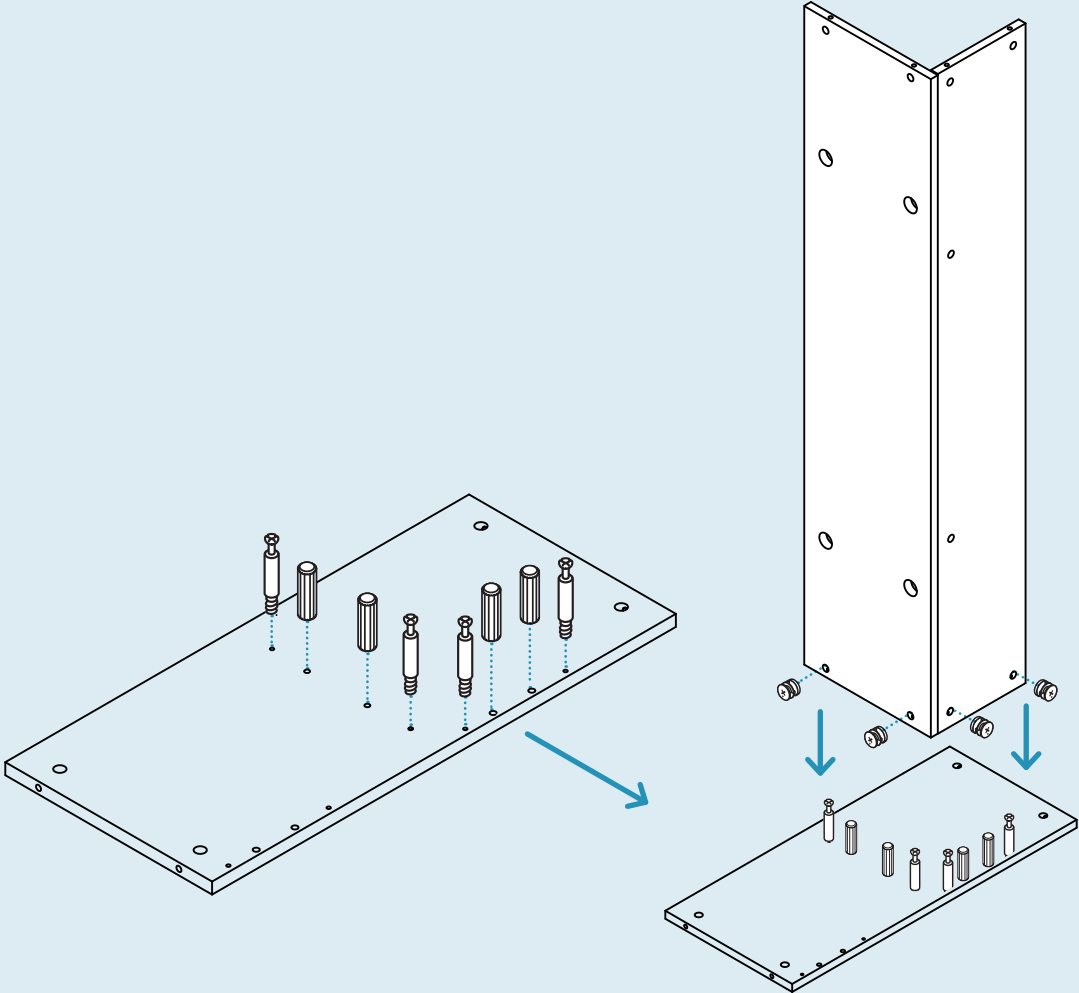
PT. 5001 X 2

PT. 5002 X 2

# Step 02

BEGIN ASSEMBLING CASE.

Attach side panel to shelf and back panels as shown using the provided hardware. Refer to page 3 on how to use the cam lock system.

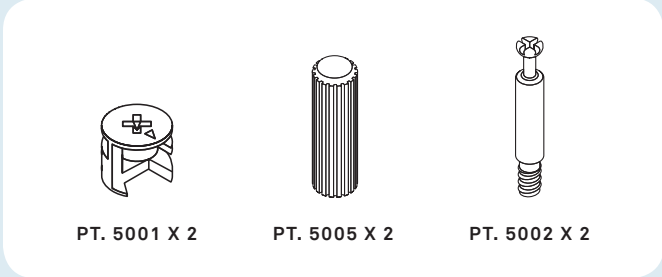
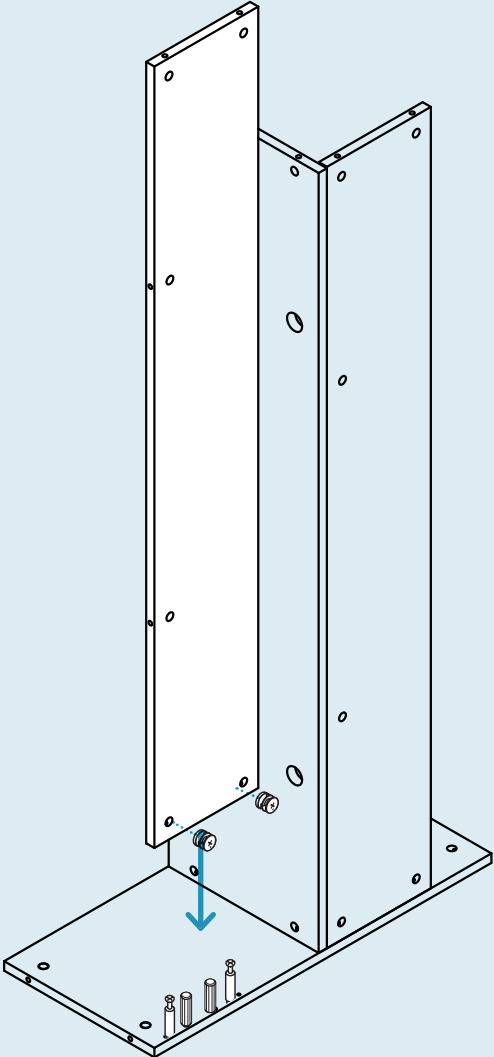


PT. 5001 X 4      PT. 5005 X 4      PT. 5002 X 4

# Step 03

## ATTACH BACK PANEL.

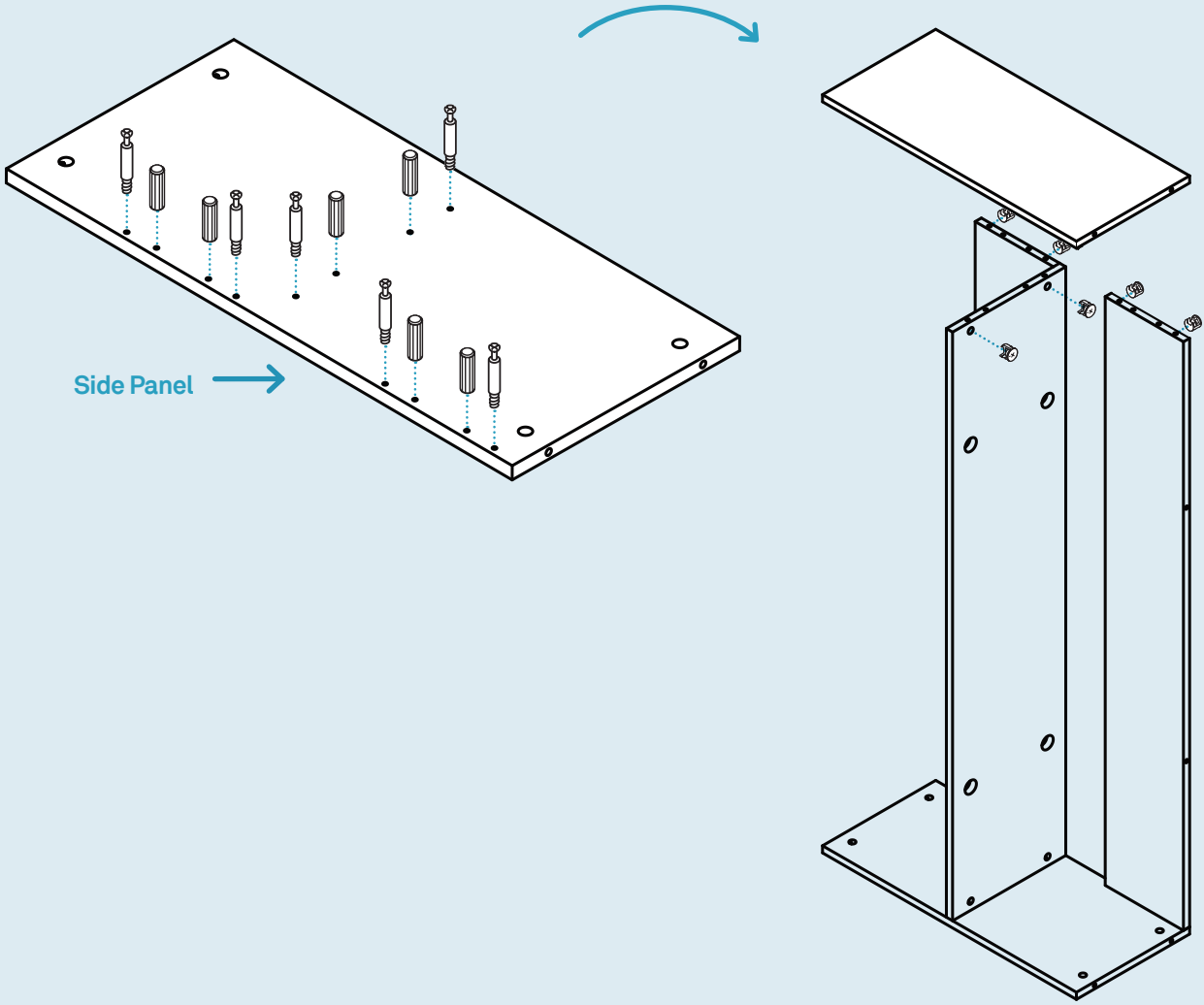
Attach the back panel using the provided hardware as shown. Refer to page 3 on how to the cam lock system.



# Step 04

## ATTACH SIDE PANEL.

Attach side panel as shown using the provided hardware. Refer to page 3 on how to use the cam lock system.



PT. 5001 X 6



PT. 5005 X 6



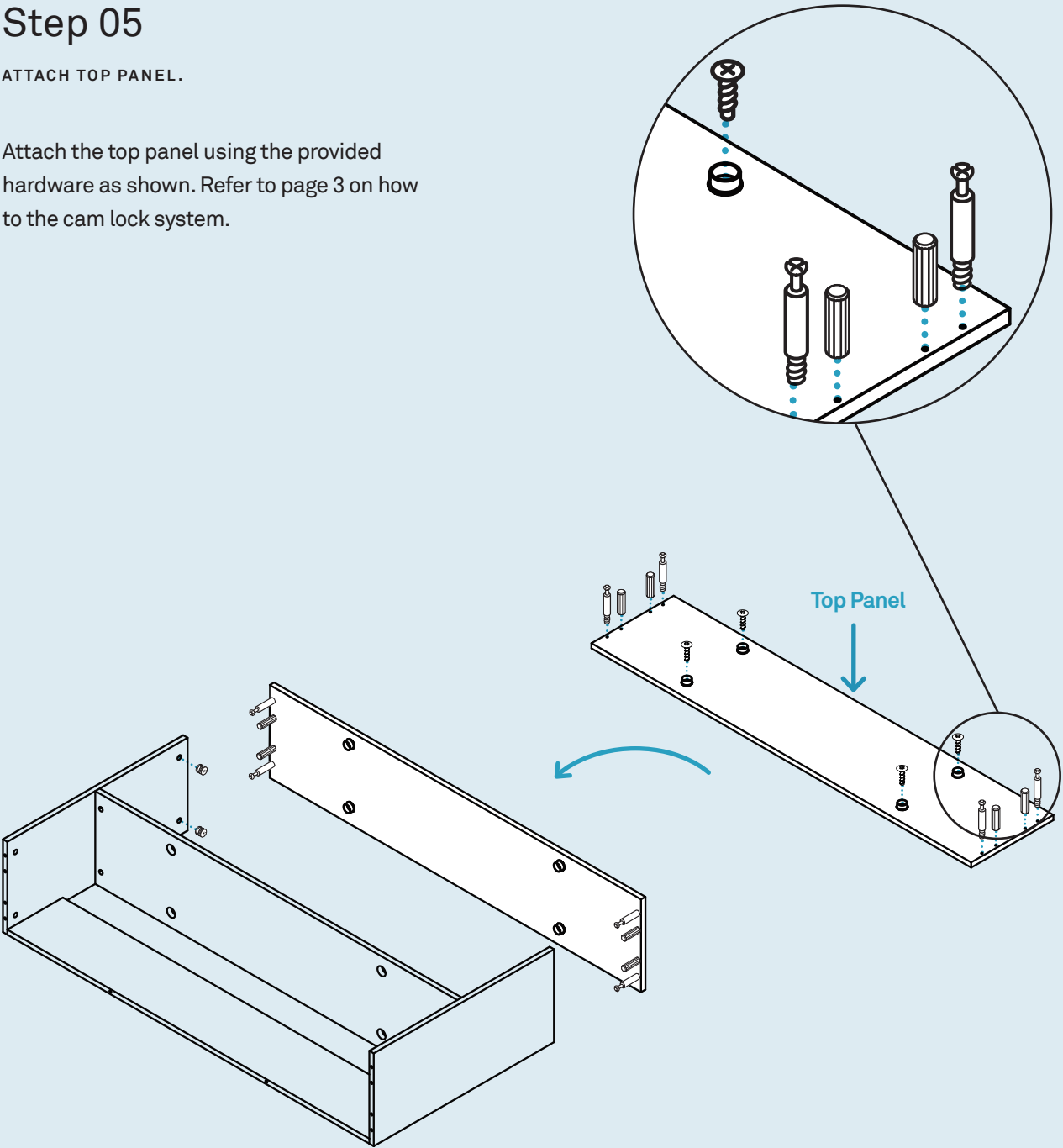
PT. 5002 X 6








# Step 05

## ATTACH TOP PANEL.

Attach the top panel using the provided hardware as shown. Refer to page 3 on how to the cam lock system.

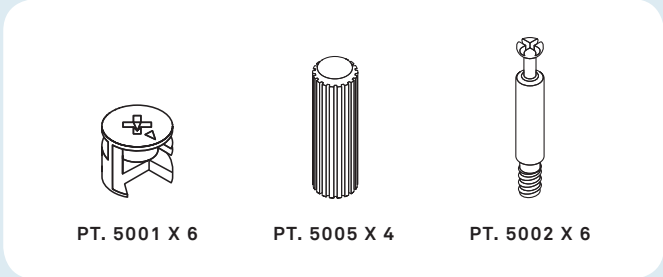
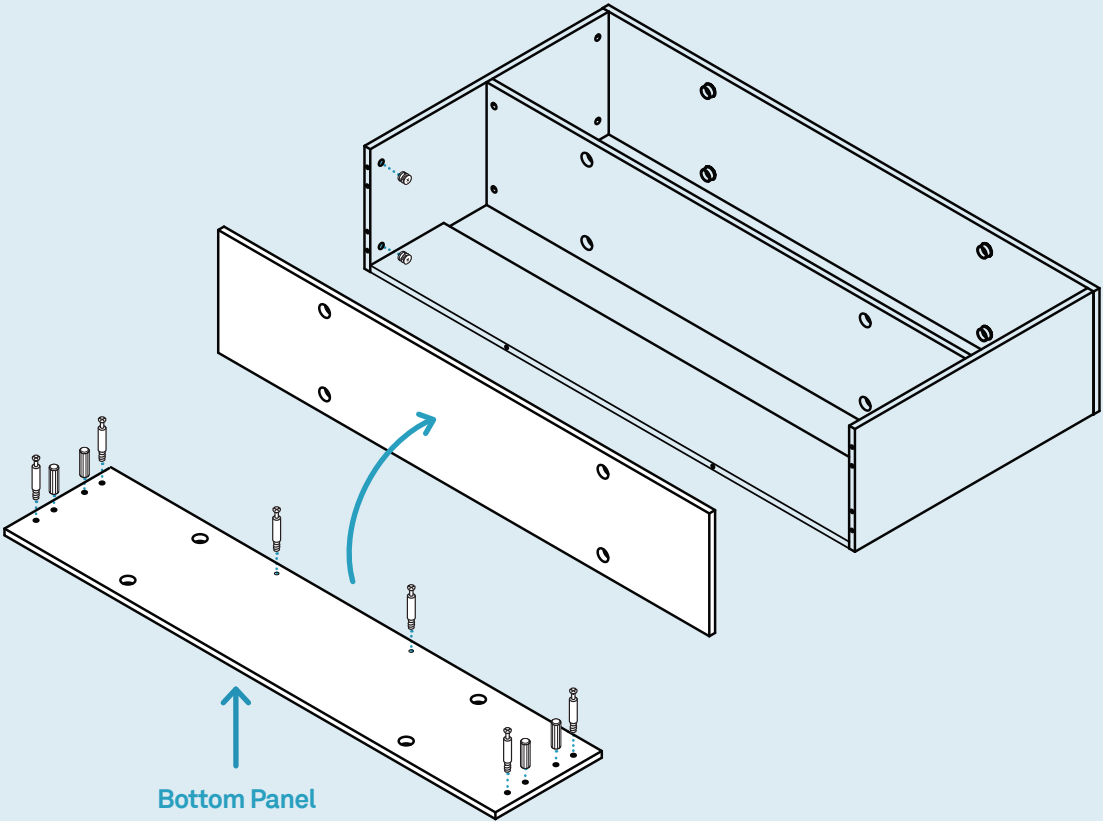


				
PT. 5001 X 4	PT. 5005 X 4	PT. 5002 X 4	PT. 1207 X 4	PT. 8002 X 4

# Step 06

## ATTACH BOTTOM PANEL.

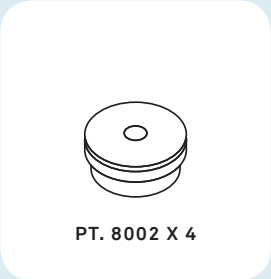
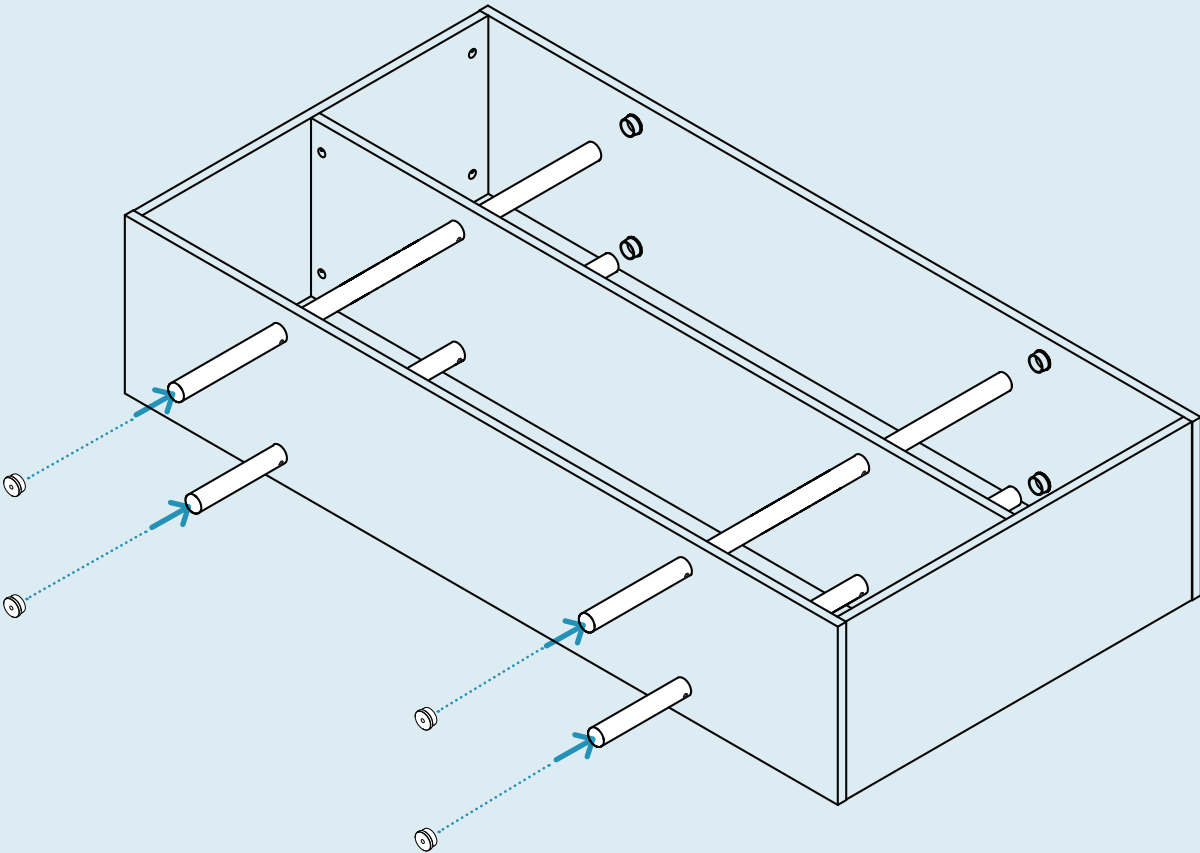
Attach the bottom panel using the provided hardware as shown. Refer to page 3 on how to the cam lock system



# Step 07

INSERT POST.

Partially insert posts as shown.

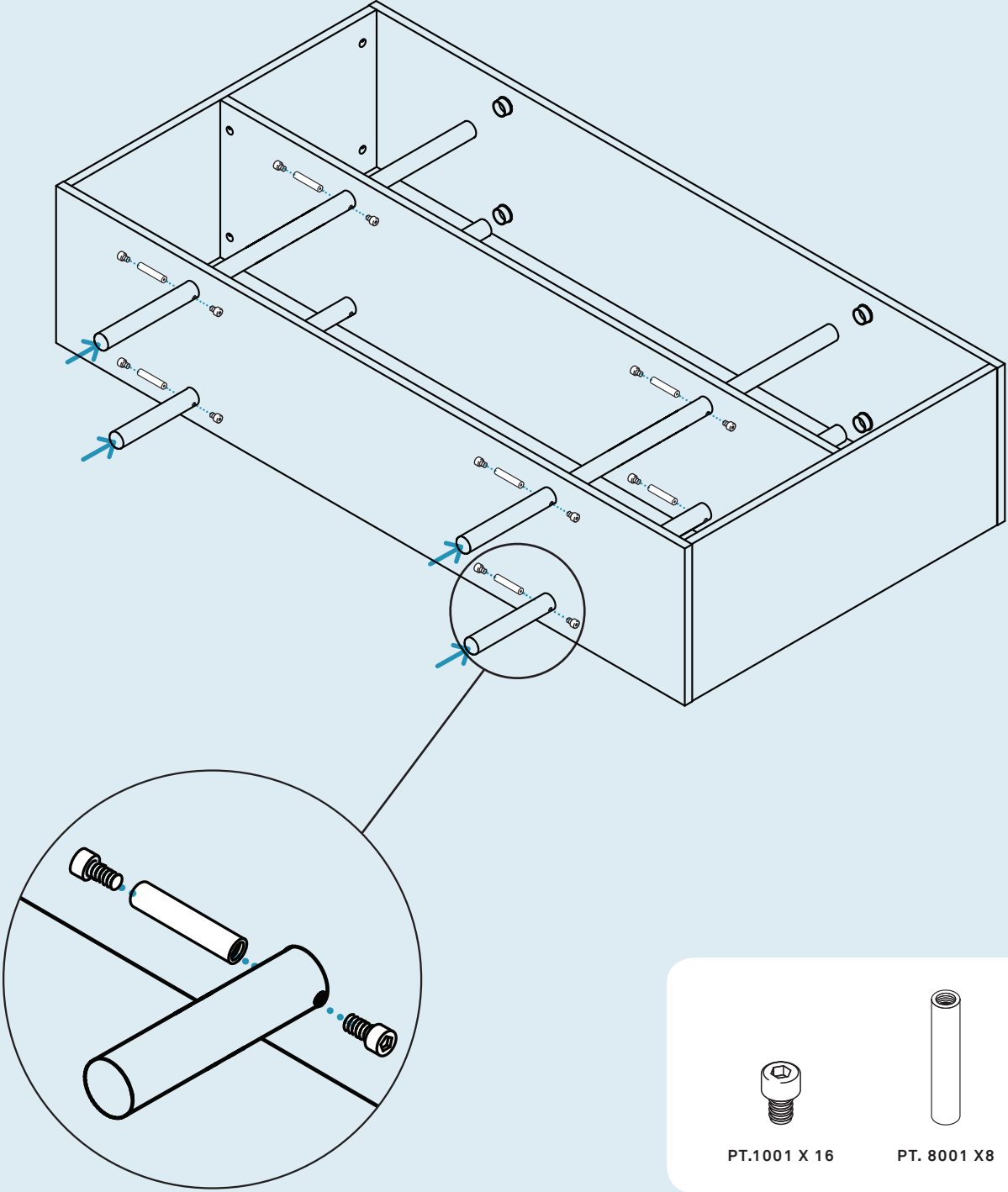


PT. 8002 X 4

# Step 08

## SECURING THE POST.

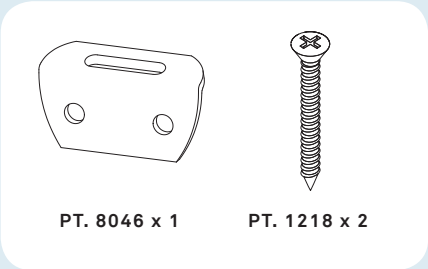
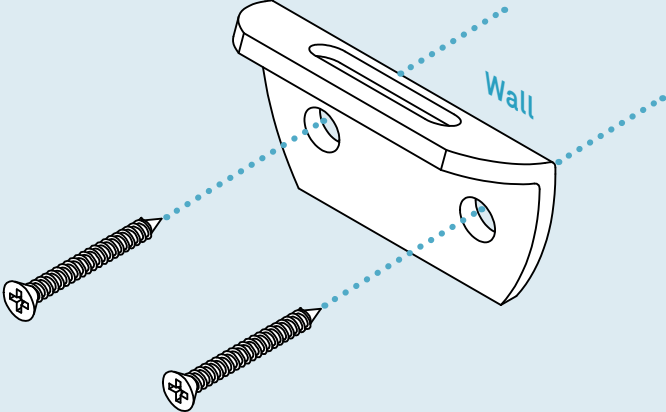
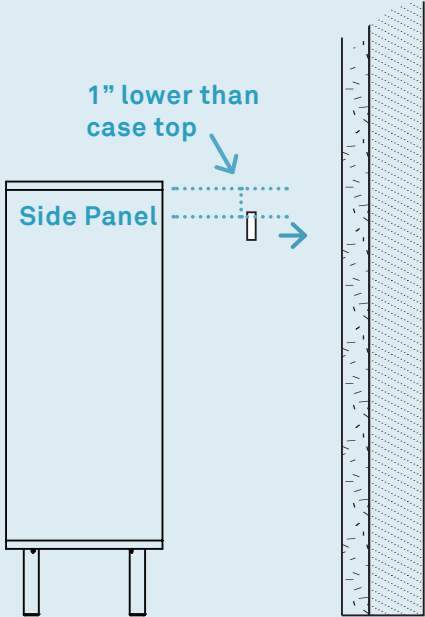
Install hardware as shown. Once completed, finish installing posts.



# Step 09

ATTACH ANTI-TIP BRACKET TO THE WALL.

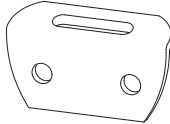
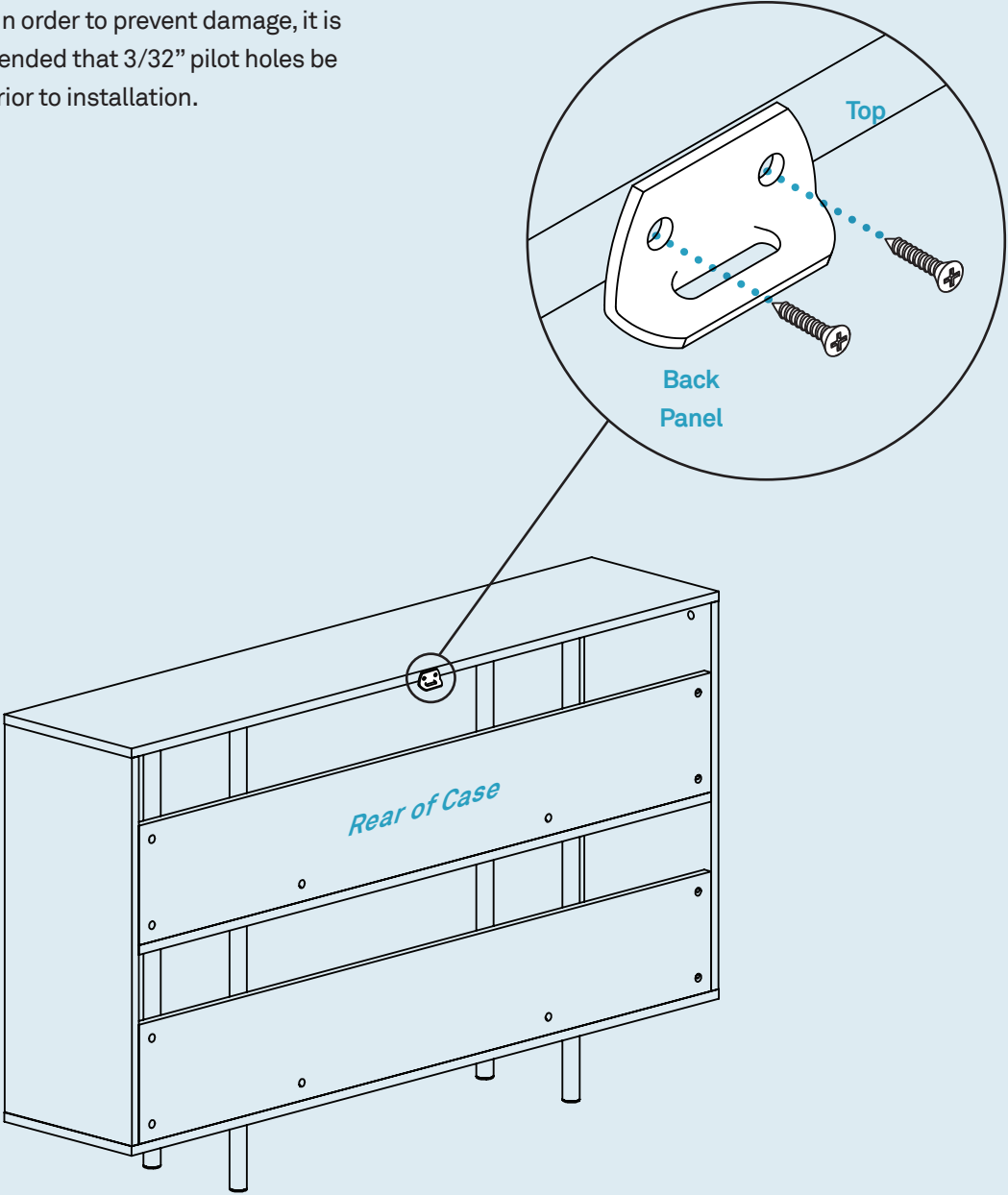
Install anti-tip bracket to wall stud 1-inch below case top panel height.



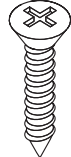
# Step 10

## INSTALL ANTI-TIP BRACKET TO CASE.

Bracket must be installed to top panel of case. In order to prevent damage, it is recommended that 3/32" pilot holes be drilled prior to installation.



PT. 8046 x 1

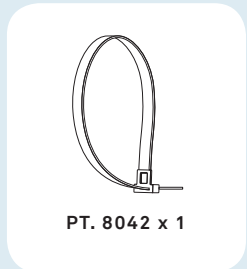
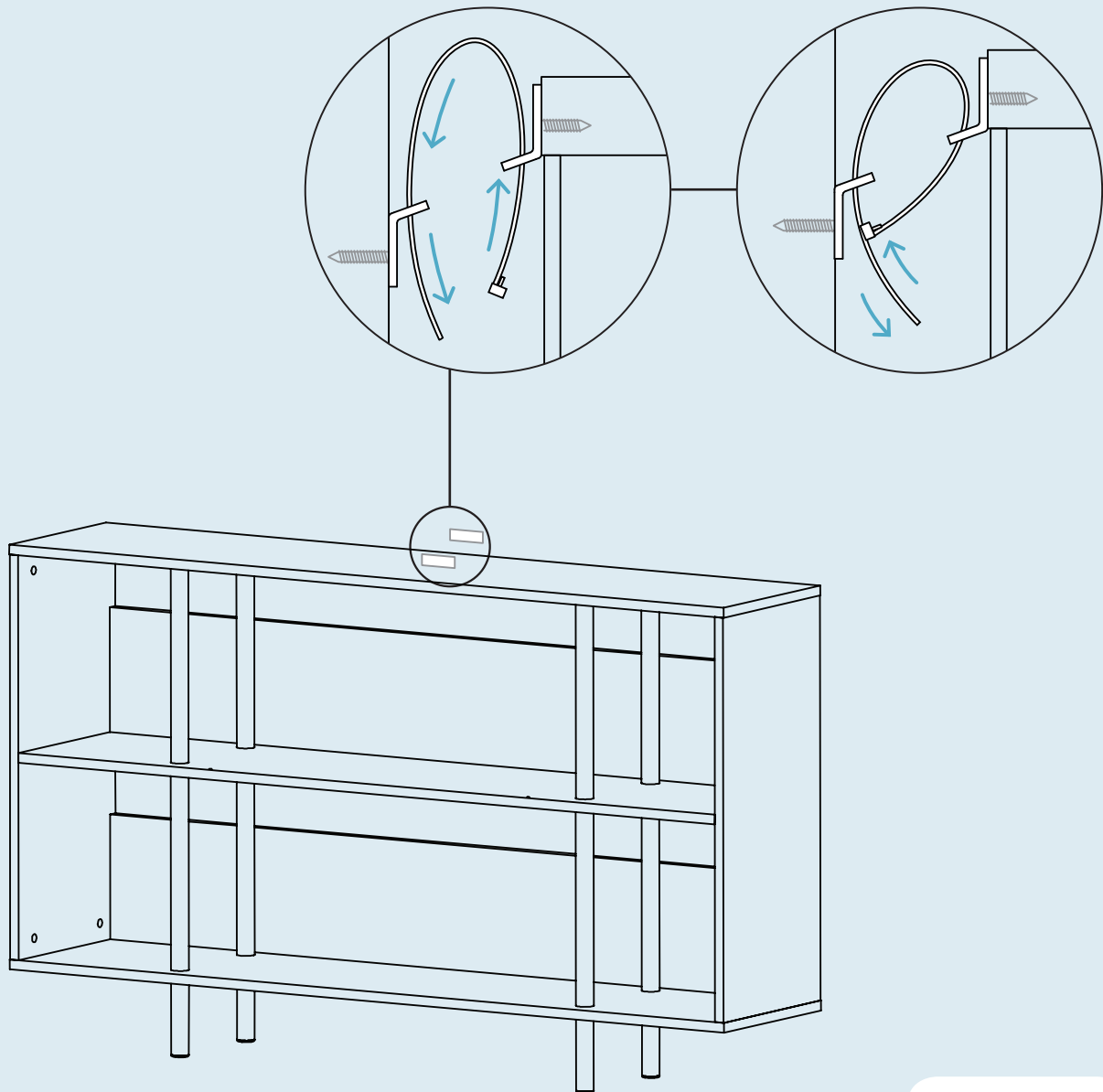


PT. 1217 x 2

# Step 11

SECURE THE CASE.

Install and tighten the strap prior to using the product.



## Additional Information

### CLEAN

Clean with a slightly damp, soft cloth. To remove dirt and fingerprints, use a quality cleaner formulate for wood furniture. Wipe completely dry with a soft cloth in the direction of the wood grain.

