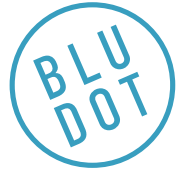
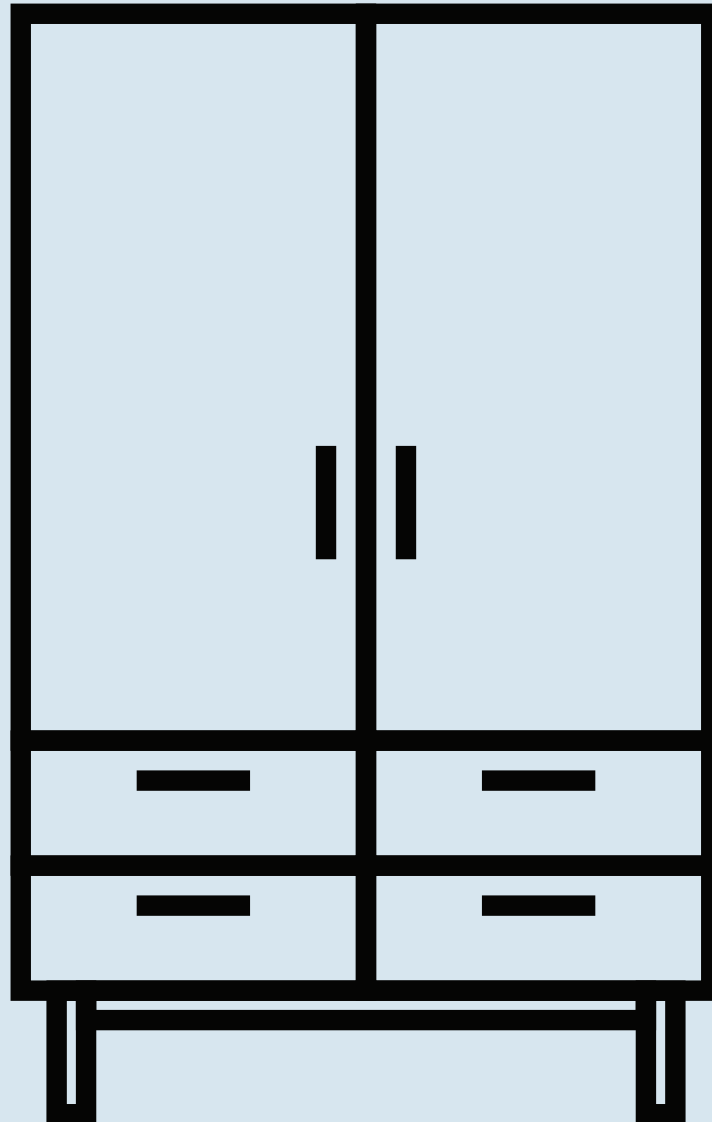


Shale Wardrobe & Cabinet



DESIGNED IN 2016

ASSEMBLY NOTES | REV 00



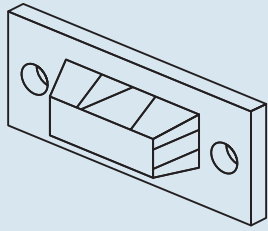
NO SKELETONS HERE!

Layers of clean details. Warm wood and full grain leather pulls add storage panache and practicality.

NEED A HAND?

Contact us at service@bludot.com or **844.425.8368** for assistance.

Parts & Hardware



QTY

4

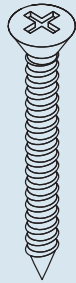
Pt. 8041



QTY

4

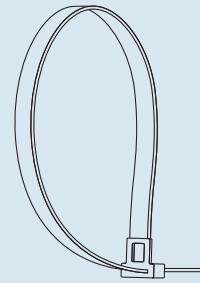
Pt. 1217



QTY

4

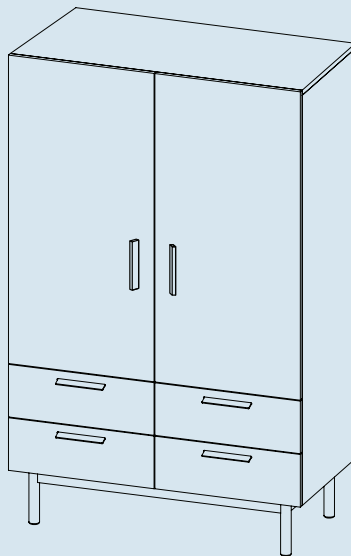
Pt. 1218



QTY

2

Pt. 8042



QTY

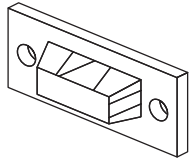
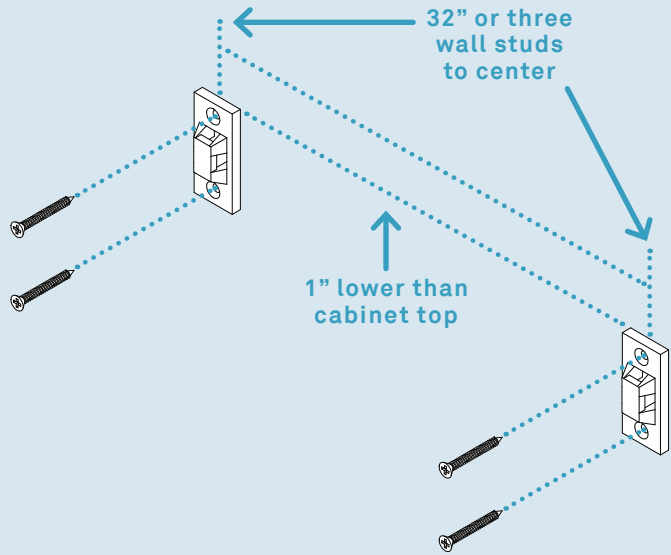
1

Cabinet

Step 01

ATTACH ANTI-TIP BRACKETS TO THE WALL.

Install anti-tip brackets
1-inch below cabinet
top panel height.



Pt. 8041 x 2

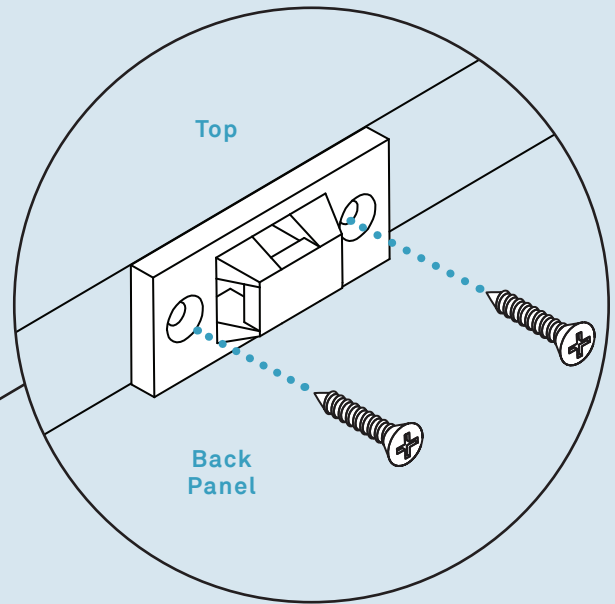
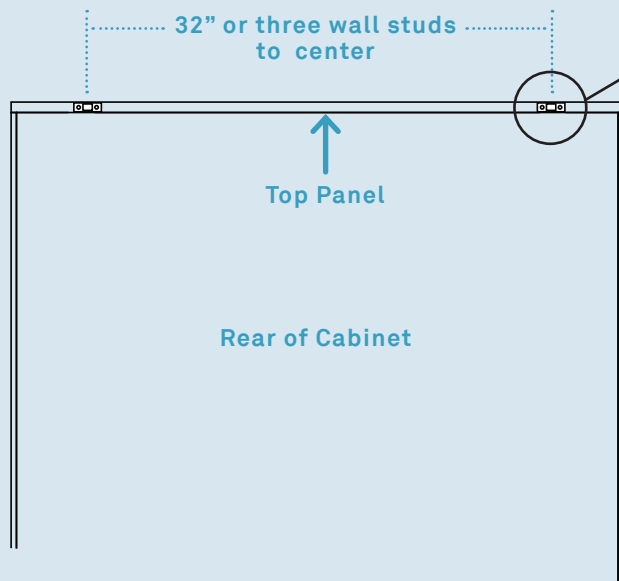


Pt. 1218 x 4

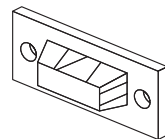
Step 02

INSTALL ANTI-TIP BRACKETS
TO CABINET.

Brackets must be installed to top panel of cabinet.
In order to prevent damage, it is recommended that
3/32" pilot holes be drilled prior to installation.



Pt. 1217 x 4

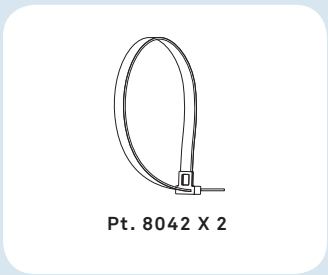
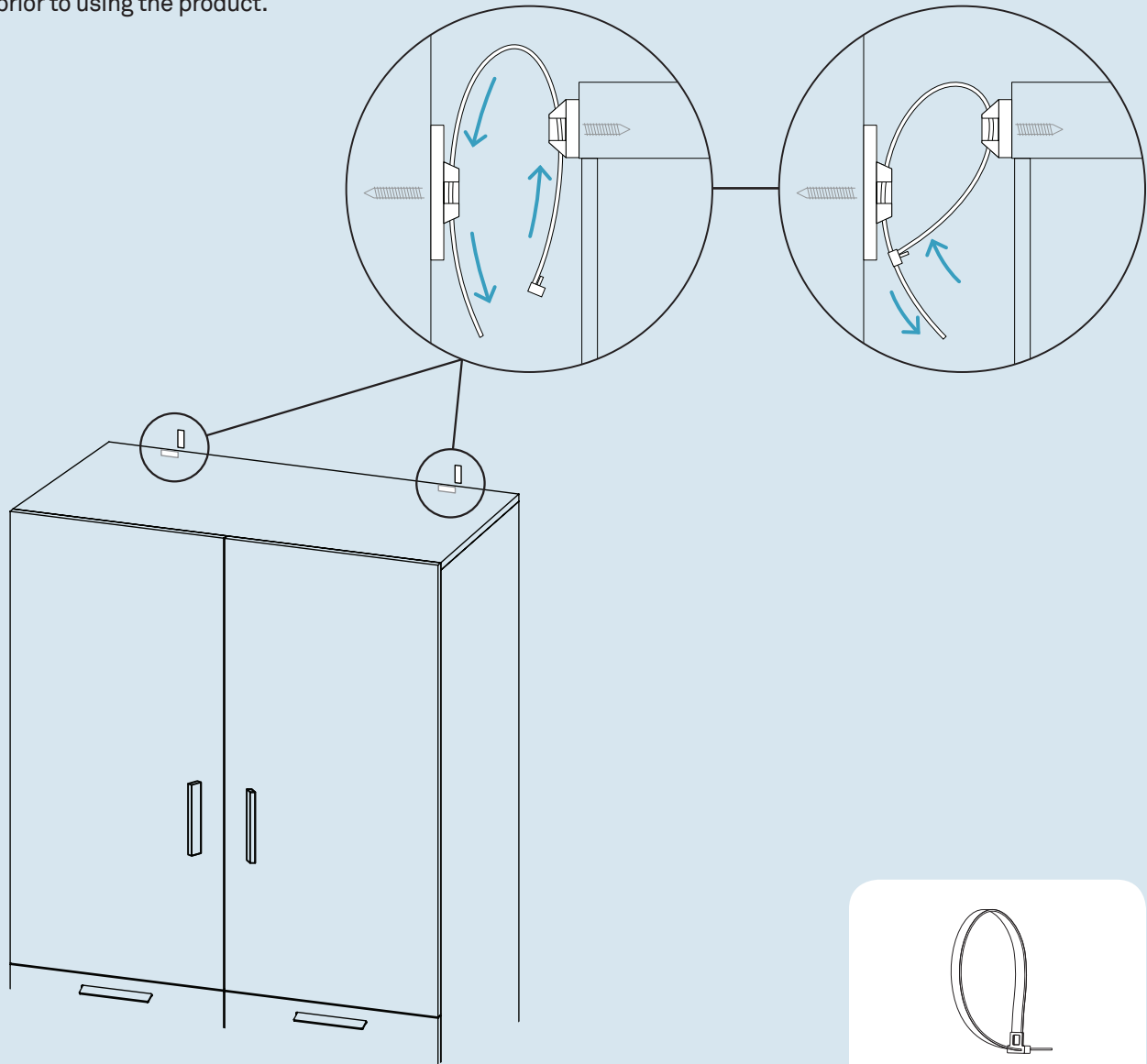


Pt. 8041 x 2

Step 03

SECURE CABINET.

Install and tighten wall straps prior to using the product.



Additional Information

CLEAN

Clean with a slightly damp, soft cloth. To remove dirt and fingerprints, use a quality cleaner formulate for wood furniture. Wipe completely dry with a soft cloth in the direction of the wood grain.

